

ULT 1200



LASER FUMES



DUST AND SMOKE



SOLDERING FUMES



ODORS, GASES, AND VAPORS



CLEANING INDUSTRIAL GASES



NEW EMISSIONS



WELDING FUMES



OIL AND EMULSION MISTS



COMPLETE SOLUTIONS

Version: 02

Dated: 11/2022





Accessory articles

Devices	3
DN150 extraction system	5
DN160 extraction system	6
DN200 exhaust air system.....	7
Replacement filter	8

In conjunction with their filters, the ULT 1200 filter devices offer a specific solution for all extraction purposes

ULT AG offers a range of selected suction hoses and accessories for individually configuring the ULT 1200. The product range includes DN150 and DN160 diameters.

The ULT 1200 can be operated with an extraction arm from the manufacturer Flextraction®. With the practical swivel ring, the extraction arm can be installed directly on the device.

A wide range of System 160 extraction arms are available for the device. You can choose from a wide range of models and lengths. You can choose between wall and device mounting. All models are available as oil resistant, ATEX certified or chemical resistant versions.

Extraction arms adapt perfectly to different workplace geometries and working conditions. Telescopic extraction arms are specially designed for working conditions with restrictions such as low ceilings or cramped spaces

To ensure full capture, you can select collecting elements matching the pollution source. Flat hoods concentrate the extraction flow and flared hoods catch rising vapors.



Devices

The accessory portfolio relates to the following devices:

ACD – Odor, Gas and Vapors

Storage filter devices



ACD 1200 MD.80 A28	800 m³/h	ACD 1200.0-MD.80.15.1010
ACD 1200 MD.18 A28	1000 m³/h	ACD 1200.0-MD.18.01.1010
Exhaust DN200		9-00089
Interface SUB D9		9-00090
Hour counter*		9-00093
50% Chemisorption		9-00096
100% Chemisorption		9-00097
Blower MD.18d for 100-120V*		9-00098
Exhaust silencer		9-00099



ACD 1200 MD.18 A60	800 m³/h	ACD 1200.0-MD.18.01.1004
Exhaust DN200		9-00089
Interface SUB D9		9-00090
Hour counter*		9-00093
Blower MD.18d for 100-120V*		9-00098
Exhaust silencer		9-00099

*only for MD.18 devices

ACD – Ex-Devices for Odor, Gas and Vapors

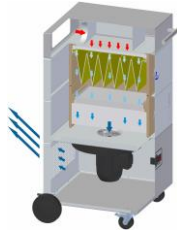


Storage filter devices

ACD 1200 MD.46 A46 Ex	1000 m³/h	ACD 1200.0-MD.46.00.1012
Hour counter for Ex-Devices		9-00100

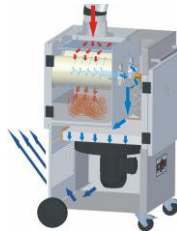
Devices

ASD – Dust and Smoke



Pocket filter devices

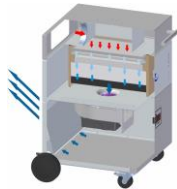
ASD 1200 MD.18 TH	1000 m ³ /h	ASD 1200.0-MD.18.10.3005
Exhaust DN200		9-00089
Interface SUB D9		9-00090
Hour counter		9-00093
Blower MD.18d for 100-120V		9-00098
Exhaust silencer		9-00099



Cartridge filter devices

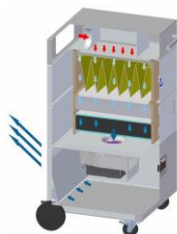
ASD 1200 MD.18 2Pa	1000 m ³ /h	ASD 1200.0-MD.18.18.4002
Exhaust DN200		9-00089
Interface SUB D9		9-00090
Hour counter		9-00093
Adsorption filter A8		9-00094
Particle filter cassette H13		9-00095
Blower MD.18d for 100-120V		9-00098

LAS – Laser Fumes



Storage filter devices

LAS 1200 MD.18 K	1000 m ³ /h	LAS 1200.0-MD.18.10.6002
Exhaust DN200		9-00089
Interface SUB D9		9-00090
Hour counter		9-00093
Blower MD.18d for 100-120V		9-00098
Exhaust silencer		9-00099

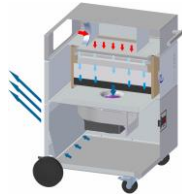


Pocket filter devices

LAS 1200 MD.18 THA16	1000 m ³ /h	LAS 1200.0-MD.18.10.5009
Exhaust DN200		9-00089
Interface SUB D9		9-00090
Hour counter		9-00093
Blower MD.18d for 100-120V		9-00098
Exhaust silencer		9-00099

Devices

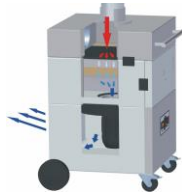
LRA – Soldering Smoke



Storage filter devices

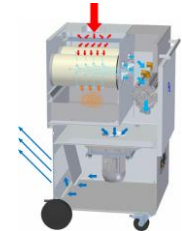
LRA 1200 MD.18 K	1000 m³/h	LRA 1200.0-MD.18.10.6002
Exhaust DN200		9-00089
Interface SUB D9		9-00090
Hour counter		9-00093
Blower MD.18d for 100-120V		9-00098
Exhaust silencer		9-00099

SRA – Welding Fumes



Storage filter devices

SRA 1200 MD.80 F	800 m³/h	SRA 1200.0-MD.80.14.3006
Exhaust DN200		9-00089
Interface SUB D9		9-00090
Spark protection		9-00091
Adsorption filter A8 (integrated)		9-00092



Cartridge filter devices

SRA 1200 MD.80 2Pa	800 m³/h	SRA 1200.0-MD.80.14.4002
Exhaust DN200		9-00089
Interface SUB D9		9-00090
Adsorption filter A8		9-00094
Particle filter cassette H13		9-00095

DN150 extraction system

Hoses



Suction hose DN150, per meter	without accessories	6-06772
Suction hose DN150, per meter	antistatic, without accessories	6-06752

Hose accessories



Spiral hose clamp	145-165 mm	6-06966
-------------------	------------	---------

DN160 extraction system

Hoses



Suction hose DN160, per meter	antistatic, without accessories	6-06749
Suction hose DN160, per meter	electroconductive, without accessories	6-06842

Hose accessories



Spiral hose clamp	155-175 mm	6-06954
End piece DN160	antistatic	6-07282

Elements for extraction arm mounting



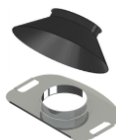
360° swivel, mild steel polyester coated black	Device mounting extraction arm, Flextractor accessory	CB-SU-160
---	---	-----------

Extraction arms



Extraction arm DN160m, 2 meters	with wall mounting, without collecting element	CA2-160-B- PU301
Welding smoke-, oil- resistant	Flextractor accessory	
Telescopic arm DN160m, 1,2-1,6 meters	without collecting element	CT2-160-B- PU301
Welding smoke-, oil- resistant	Flextractor accessory	

Collecting elements



Flared hood coated black	Flextractor accessory	CH-160-Flared
Flat hood coated black	Flextractor accessory	CH-160-Flat

Extraction arm set Flextraction



Articulated extraction arm DN160, 3m, with slewing ring abrasion, chemicals, welding fume,oil and temperature proof up to 90°C	Flextractor Accessories	5-01587
incl. flat hood, powder coated		
incl. intake mesh, plastics		

DN160 extraction system

Elements for extraction arm mounting for EX-applications



360° swivel,
mild steel polyester coated black

Device mounting
extraction arm,
Flextractor accessory

XCB-SU-160

Extraction arms for EX-applications



Extraction arm DN160m,
2 meters

with wall mounting,
without collecting element

XCA2-160-B-
PE322

ATEX certified

Flextractor accessory



Telescopic arm DN160m,
1,2-1,6 meters

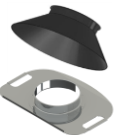
without collecting element

XCT2-160-B-
PE322

ATEX certified

Flextractor accessory

Collecting elements for Ex-applications



Flared hood ATEX certified

Flextractor accessory

XCH-160-
Flared

Flat hood ATEX certified

Flextractor accessory

XCH-160-Flat

Extraction arm set Flextraction ATEX



Articulated extraction arm DN160,
3m, with slewing ring, ATEX-
certified
Chemicals and temperature proof
up to 80°C

Flextractor Accessoires

5-01588

incl.
flat hood, powder coated,
ATEX-certified

incl.
intake mesh
ATEX-certified

DN200 exhaust air system

Hoses



Suction hose DN200,
per meter

without accessory

6-06775

Suction hose DN200,
per meter

electroconductive,
without accessories

6-06840

Hose accessories



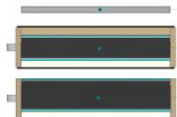
Spiral hose clamp

195-215 mm

6-06955

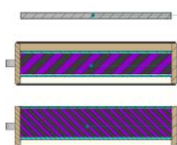
Replacement filter

ACD

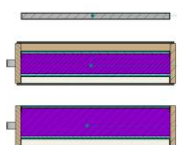


Filter A28

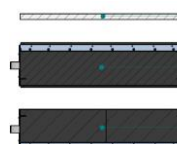
Z-Line filter G4-02	4-00310
Adsorption filter cassette A12 top	4-00401
Adsorption filter cassette A16 bottom	4-00399



Z-Line filter G4-02	4-00310
Chemisorption filter cassette AC15 top	4-00414
Chemisorption filter cassette AC21 bottom	4-00415

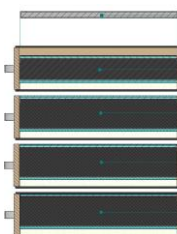


Z-Line filter G4-02	4-00310
Chemisorption filter cassette C19 top	4-00417
Chemisorption filter cassette C26 bottom	4-00416



Filter A46 Ex

Filter mat M5	4-00248
Adsorption filter cassette A23 top	4-00397
Adsorption filter cassette A23 bottom	4-00396

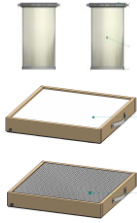


Filter A60

Z-Line filter G4-02 - Set of 10 pcs	4-00311
Adsorption filter cassette A12 top	4-00401
Adsorption filter cassette A16 bottom (3 pieces needed per device)	4-00399

Replacement filter

ASD

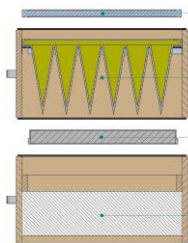


Filter 2Pa

Filter cartridge PTFE – Set of 2 pcs	4-00586
Particle filter cassette H13*	4-00100
Adsorption filter cassette A8*	4-00398

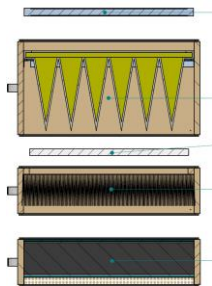
*optional

Filter TH



Expanded metal filter	4-00312
Pocket filter F7 - Set of 10 pcs	4-00182
Z-Line filter F7	4-00331
Particle filter cassette H13	4-00092

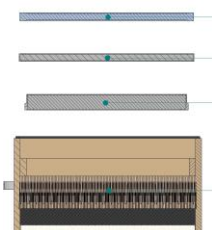
LAS



Filter THA

Expanded metal filter	4-00312
Pocket filter F7	4-00181
Filter mat M5	4-00246
Particle filter cassette H13	4-00094
Adsorption filter cassette A16 bottom	4-00399

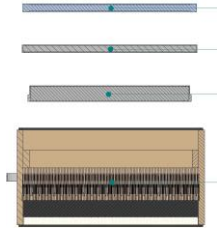
Filter K



Expanded metal filter	4-00312
Z-Line filter G4-02 - Set of 10 pcs	4-00311
Z-Line filter F7	4-00331
Combined filter cassette H13A8	4-00096

Replacement filter

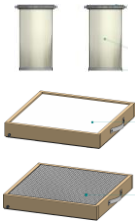
LRA



Filter K

Expanded metal filter	4-00312
Z-Line filter G4-02 - Set of 10 pcs	4-00311
Z-Line filter F7	4-00331
Combined filter cassette H13A8	4-00096

SRA

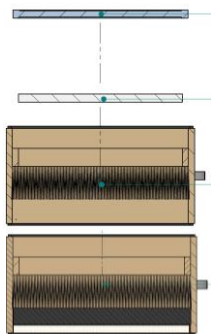


Filter 2Pa

Filter cartridge PTFE – Set of 2 pcs	4-00167
Particle filter cassette H13*	4-00100
Adsorption filter cassette A8*	4-00398

*optional

Filter F



Expanded metal filter	4-00312
Filter mat G4 - Set of 10 pcs	4-00245
Particle filter cassette F9 (standard)	4-00098
Combined filter cassette F9A (alternative to 4-00098)	4-00099